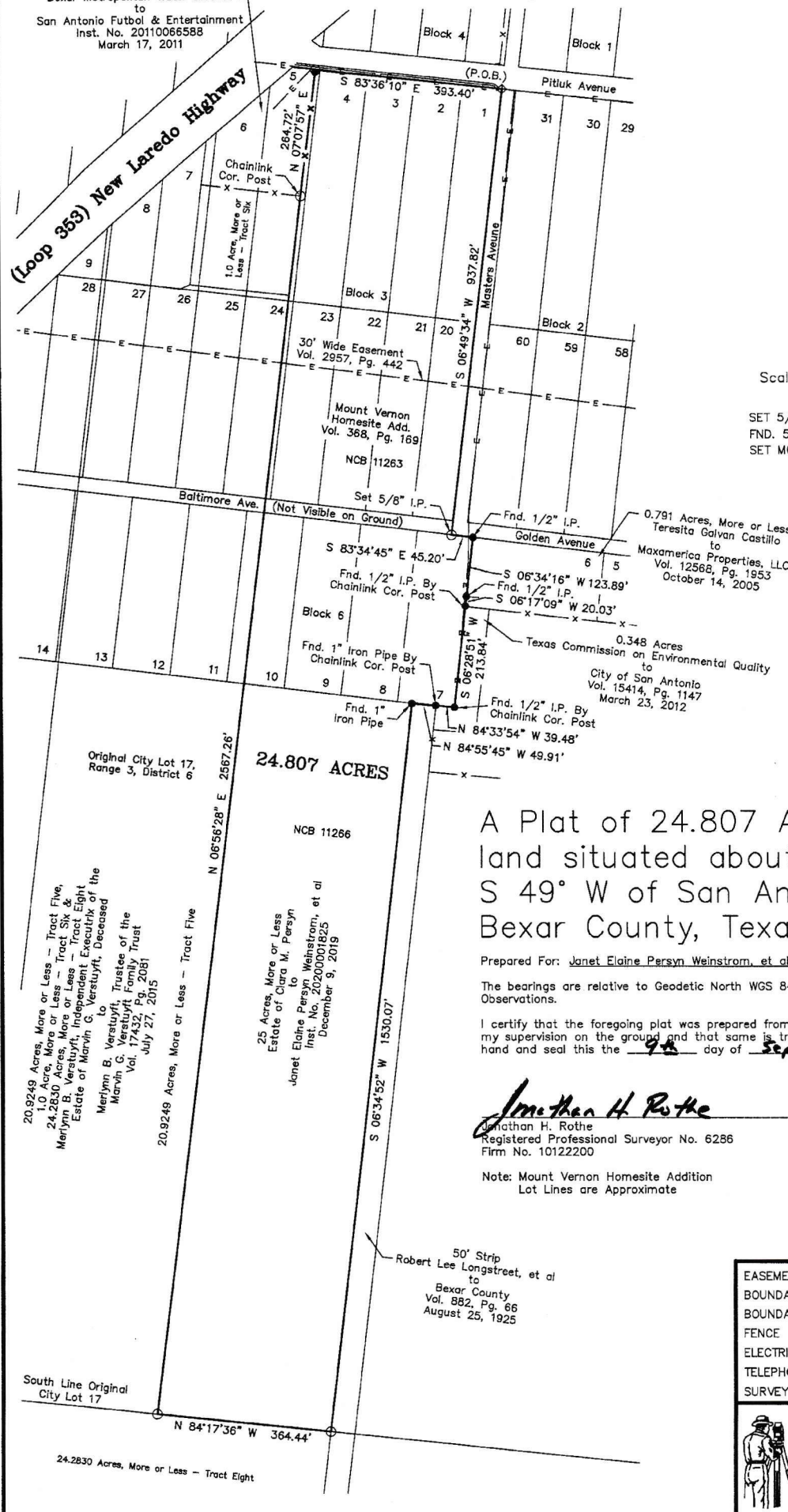


Bexar County, Texas

0.94 Acres, More or Less
Bexar Metropolitan Water District
to
San Antonio Futbol & Entertainment
Inst. No. 20110066588
March 17, 2011

(Loop 359) New Laredo Highway



Scale: 1"=200'

LEGEND:
SET 5/8" IRON PIN —○
FND. 5/8" IRON PIN —●
SET MON. SPIKE —⊕

24.807 ACRES

A Plat of 24.807 Acres of land situated about 6.8 miles S 49° W of San Antonio, in Bexar County, Texas.

Prepared For: Janet Elaine Persyn Weinstrom, et al

The bearings are relative to Geodetic North WGS 84 as taken from GPS Observations.

I certify that the foregoing plat was prepared from an actual survey made under my supervision on the ground and that same is true and correct. Witness my hand and seal this the 9th day of September, 2021.

Jonathan H. Rothe
Jonathan H. Rothe
Registered Professional Surveyor No. 6286
Firm No. 10122200

Note: Mount Vernon Homesite Addition Lot Lines are Approximate



LEGEND

EASEMENT LINE	---
BOUNDARY FENCE	—x—x—
BOUNDARY LINE	—
FENCE	—x—x—
ELECTRIC LINE	—E—E—
TELEPHONE LINE	—T—T—
SURVEY LINE	—



Rothe & Associates, PLLC
Surveying & Engineering
1705 Ave. K, P.O. Box 426
Hondo, TX 78861
Ph: (830)426-3005
Fax: (830)426-8160
e-mail: crassoc@hondo.net
www.rothelandsurveyor.com

20.9249 Acres, More or Less — Tract Five,
1.0 Acre, More or Less — Tract Six &
24.2830 Acres, More or Less — Tract Eight
Merlynn B. Verstuyft, Independent Executor of the
Estate of Marvin G. Verstuyft, Deceased
Merlynn B. Verstuyft, Trustee of the
Marvin G. Verstuyft Family Trust
Vol. 17439, Pg. 2081
July 27, 2015

25 Acres, More or Less
Estate of Clara M. Persyn
to
Janet Elaine Persyn Weinstrom, et al
Inst. No. 20200001825
December 9, 2019

50' Strip
Robert Lee Longstreet, et al
to
Bexar County
Vol. 882, Pg. 66
August 25, 1925

South Line Original
City Lot 17

24.2830 Acres, More or Less — Tract Eight